



The HC Companies®
Leader in Horticultural Containers

CANNABIS CONTAINERS

From Grower to Gardener, Improving Our World.

We continue to grow and thrive together by:

- Continuing to innovate and lead the industry with fresh ideas
- Investing in new equipment to stay ahead of the curve
- Helping make growing easier, from consumers to industrial growing operations
- Finding new possibilities and inspiration in every challenge
- And creating special connections and relationships with our customers

Our trusted and highly respected brand suite has been servicing the United States and Canada – producing containers close to where your business does business.

GROWER CONTAINERS



AZA06000



BDS10000



BM.20000



BW.00075



NRS001G0

Part Code	Product Description	Outside Diameter		Height		Max Liquid Volume		QTY Per Case	Full Pallets	Bulk QTY
		Inches	cm	Inches	cm	US	Metric			
AZA06000	6.00 Round Azalea Pot	6.00	15.24	4.25	10.80	1.39 qt	1.32 L	640		26.025
BDS10000	Elite 1000 Squat Nursery Pot	10.00	25.40	6.25	15.87	1.50 gal	5.67 L		4,500	
BM.04000	Elite 400 Nursery Pot	7.50	19.05	7.25	18.41	1.00 gal	3.78 L		10,125	
BM.16000	Elite 1600 Nursery Pot	11.87	30.14	10.12	25.70	3.75 gal	14.20 L		2,400	
BM.20000	Elite 2000 Nursery Pot	11.87	30.14	11.00	27.94	3.90 gal	14.76 L		2,400	
BMS03000	Elite 300 Squat Nursery Pot	6.50	16.51	6.37	16.17	2.49 qt	2.35 L			10,000
Compatible Tray: TIS66651										
BMS12000	Elite 1200 Squat Nursery Pot	11.00	27.94	7.62	19.35	2.50 gal	9.47 L		3,000	
BMS16000	Elite 1600 Squat Nursery Pot	11.87	30.14	7.75	19.68	2.88 gal	10.90 L		2,400	
BW.00075	Whiteridge BM 7 Gal 4 Handle	13.75	34.92	12.00	30.48	6.49 gal	24.56 L			
BW.00150	Whiteridge BM 15	17.75	45.08	15.75	40.00	15.00 gal	56.78 L		450	
BWS00055	Whiteridge BM 5 Squat w/Handles	14.00	35.56	9.30	23.62	5.01 gal	18.97 L			1,008
BWS00070	Whiteridge BM 7 Squat	16.00	40.64	11.62	29.51	7.50 gal	28.39 L		800	
BWS00100	Whiteridge BM 10 Squat	17.75	45.08	11.75	29.84	9.72 gal	36.78 L		540	
NRS001G0	1.00 Gal Rapid Stack™ Pot	6.5	16.51	6.75	17.145					4,320
NSS003G0	3.00 G Squat Nursery Pot	10.00	25.40	8.00	20.32	2.14 gal	8.11 L			1,400
NSS005G2	#5 Gal Squat Nursery Pot	12.00	30.48	10.25	26.03	3.75 gal	14.20 L			960
NSS007G0	7.00 G Squat Nursery Pot	15.00	38.10	11.75	29.84	7.28 gal	27.50 L			540
NSS010G0	10.00 G Squat Nursery Pot	18.00	45.72	12.00	30.48	9.64 gal	36.50 L			396
NSS015G0	15.00 G Squat Nursery Pot	19.25	48.89	15.00	38.10	12.70 gal	48.20 L			360
NSS020G0	20.00 G Squat Nursery Pot	22.00	55.88	17.00	43.18	19.70 gal	74.80 L			216
TFR001G0	1.00 G Thermo Nursery Pot	6.50	16.51	7.00	17.78	2.87 qt	2.72 L			7,500
Compatible Tray: TIS66651										
TFR002G1	2.00 G Thermo Nursery Pot	8.80	22.35	8.50	21.59	1.74 gal	6.50 L			3,240
TFR003G0	3.00 G Thermo Nursery Pot	10.25	26.03	9.12	23.16	2.58 gal	9.78 L			1,800
TFR005G0	5.00 G Thermo Nursery Pot	11.00	27.94	12.00	30.48	3.58 gal	13.5 L			1,584
SQL05501	5.50 Square Deep Perennial Tag Locator	5.25	13.33	5.93	15.06	2.04 qt	1.92 L	256		12,000
Compatible Tray: TCS08551										
SQU03500	3.50 Square Pint w/ Wave Lock® Tag Slot	3.33	8.46	4.12	10.46	1.0 pt	.47 L	864		21,632
Compatible Tray: TCS12331, TCS18331										
SQU04000	4.00 Square Quart w/ Wave Lock® Tag Slot	3.92	9.96	5.78	14.68	1.0 qt	.94 L	500		22,000
Compatible Tray: TSI104Q0, TCS10406										

→ **Free Product Samples Available** ←

GROWER CONTAINERS



NSS007G0



SQL05501



SVP04001



SQU03500



TFR002G1

Part Code	Product Description	Outside Diameter		Height		Max Liquid Volume		QTY Per Case	Full Pallets	Bulk QTY
		Inches	cm	Inches	cm	US	Metric			
SVP04001	4.00 Square Deep Vacuum Pot Press Fit	3.50	8.89	3.50	8.89	1.08 pt	510 ml	450	---	---
Compatible Tray: TCS18401										
SVP04501	4.50 Square Vacuum Pot Press Fit	4.12	10.46	3.62	9.19	1.65 pt	780 ml	300, 375, 500	---	---
Compatible Tray: TCS10452, TCS12450, TCS15451										
SVP0450D	4.50 Square Deep Vacuum Pot Press Fit	4.12	10.46	5.00	12.70	1.20 qt	1.14 L	300, 375, 500	---	---
Compatible Tray: TCS15451, TCS12450, TCS10452										

ECO-FRIENDLY PRODUCTS



FNP07070



FRS05000

EcoGrow® products are molded using recycled newspaper and a plant-based binding agent in a closed-loop water recycling facility, thereby eliminating wastewater discharge. They breathe like clay, providing an optimal environment for root systems and biodegrade quickly when planted or worked into the soil. EcoGrow containers have been Certified for Organic Farming and Gardening in both the United States and Canada according to NOP Regulation.

FiberGrow® products are molded using a slurry of fibers and binding agents in order to increase their strength and durability in such applications as planters, hanging baskets and other large containers. Available in a wide variety of shapes, sizes and styles. FiberGrow products also help insulate root systems to help protect them in fluctuating temperatures.

Part Code	Product Description	Outside Diameter		Height		Max Liquid Volume		QTY Per Case	Full Pallets	Bulk QTY
		Inches	cm	Inches	cm	US	Metric			
FNP07070*	7.50 x 7.00 FiberGrow® Nursery Pot	7.50	19.05	7.00	17.78	1.04 gal	3.94 L			1,350
FRS04500	4.50 GER EcoGrow® Round Pot	4.50	11.43	3.75	9.53	1.27 pt	0.60 L	322	6,440	6,600
Compatible with: TRS10450										
FRS05000	5.00 STD EcoGrow® Round Pot	5.00	12.70	4.75	12.07	1.92 pt	0.90 L	272	5,440	5,760
Compatible with: TRS08510										

*EcoGrow option also available



GROWER TRAYS



PLU072S0



PLU098S0



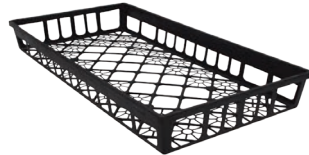
TCS10406



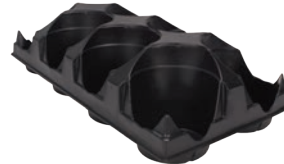
TCS12331



TIS66651



TND10200



TRS08510



TVA11210

Part Code	Product Description	Outside Diameter		Height		Max Liquid Volume		QTY Per Case	Bulk QTY
		Inches	cm	Inches	cm	US	Metric		
PLU050S0	50 TLC Ultra® Series Square Plug Tray	21.50	11.00	2.38	54.61	27.94	6.03	100	
PLU072S0	72 TLC Ultra® Series Square Plug Tray	21.00	11.00	2.25	53.34	27.94	5.72	100	
PLU098S0	98 TLC Ultra® Series Square Plug Tray	21.50	11.00	2.00	54.61	27.94	5.08	100	
TCS08551	8 Pocket Square Carry Tray For 05.50 Pot	21.25	10.62	3.87	53.98	26.97	9.83	50	
TCS10406	10 Count WM Tray for Quart	19.87	7.88	2.65	50.47	20.02	6.73	50	
Compatible Containers: SQU04000									
TCS10452	10 Pocket Square Carry Tray For 04.50 Pot (Press Fit)	21.25	8.62	2.00	53.98	21.89	5.08	50	
Compatible Containers: SVP04501, SVP0450D									
TCS12331	12 Count Carry Tray for 1.0 Pint	10.00	6.50	2.00	25.40	16.51	5.08	100	
Compatible Containers: SQU03500									
TCS12450	12 Pocket Square Carry Tray For 04.50 Pot (Press Fit)	16.75	12.50	2.37	42.55	31.75	6.02	50	
Compatible Containers: SVP04501, SVP0450D									
TCS15451	15 Pocket Square Carry Tray For 04.125 Pot (Press Fit)	21.25	13.00	2.00	53.98	33.02	5.08	50	
Compatible Containers: SVP04501, SVP0450D									
TCS18331	18 Count Carry Tray for 1.0 Pint	20.00	10.00	2.50	50.80	25.40	6.35	50	
Compatible Containers: SQU03500									
TCS18401	18 Pocket Square Carry Tray For 04.00 Pot (Press Fit)	21.25	10.63	2.38	53.98	26.99	6.03	50	
Compatible Containers: SVP04001									
TIS66651	6 Count Universal Trade Gallon Injection Spacer Tray	19.00	12.60	2.60	48.26	32.00	6.60	25	
Compatible Containers: NSR001G0, TFR001G0, BMS03000									
TND10200	1020 Daisy Tray	21.00	10.75	2.38	53.34	27.31	6.03	50	
TRS08510	8 Pocket Tray For 5" Regal STD. Round Pots	20.37	10.18	5.00	51.74	25.86	12.70	50	
Compatible Containers: FRS05000									
TRS10450	10 Pocket Tray For 4.5" AZ & STD Round Pots	23.25	9.37	4.00	59.06	23.80	10.16	50	
Compatible Containers: FRS04500									
TSI104Q0	10 Count Injection Tray for Quart	19.88	7.75	2.50	50.50	19.69	6.35	25	
Compatible Containers: SQU04000									
TVA11210	1020 Standard Full Depth Vacuum Flat	21.00	10.50	2.38	53.34	26.67	6.03	100	



The HC Companies
Leader in Horticultural Containers

Corporate Headquarters:
2450 Edison Blvd, Suite 3
Twinsburg, OH 44087



Customer Service:
800-225-7712
customersupport@hc-companies.com

Find us Online:
hc-companies.com